

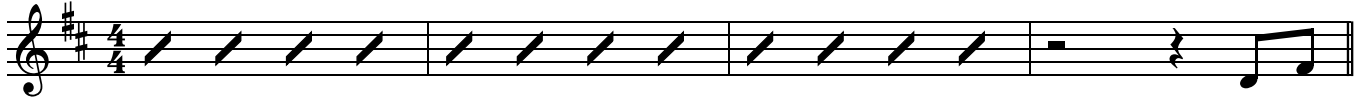
Lord I Need You

Words and Music by
Jesse Reeves, Kristian Stanfill, Matt Maher,
Christy Nockels and Daniel Carson

♩=74

INTRO

D G²(no3) D G²(no3) D



1. Lord, I

VERSE 1

5 D G²(no3) D A/C# Bm⁷ A^{sus} G²(no3)



come, I con - fess. Bow-ing here, I find my ____ rest. And with-out

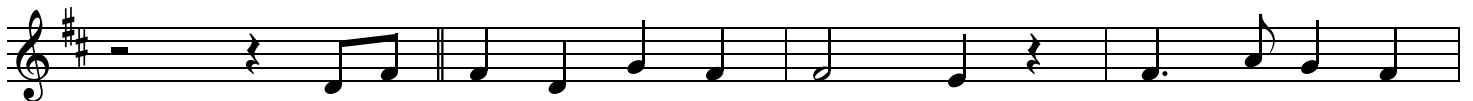
9 D G²(no3) D A^{sus} A G²(no3)



You, I fall a - part. You're the one that guides my ____ heart.

CHORUS 1

13 D G D A/C# Bm⁷ G



Lord, I need You, oh, I need You. Ev - 'ry hour I

17 D A D/F# G D/A G/B D/A A



need You. My one de-fense, my right - eous-ness; Oh, God, how I need

VERSE 2

21 D G²(no3) D D G²(no3) D A/C#

You. 2. Where sin runs deep, Your grace is ___ more. Where grace is

25 Bm⁷ A^{sus} G²(no3) D G²(no3)

found is where You ___ are. And where You are, Lord, I am .

28 D A^{sus} A G²(no3) D G²(no3)

___ free. Ho - li - ness is Christ in ___ me. Where You are, Lord, I am .

32 D A^{sus} A D

___ free. Ho - li - ness is Christ in ___ me. _____ Lord, I

CHORUS 1

36 D G D A/C# Bm⁷ G D A G

need You, oh, I need You. Ev - 'ry hour I need You. My

2nd time to Coda ⊕

40 D/F# G D/A G/B D/A A D

one de-fense, my right - eous-ness; Oh, God, how I need You.

BRIDGE

44 G D/F# A^{sus} Bm⁷ D/F#

So, teach my song to rise to You when temp-ta-tion comes my

48 $G^2(\text{no}3)$ G D/F# A^{sus} Bm⁷

way. And when I can - not stand, I'll fall on You.

51 $G^2(\text{no}3)$ A^{sus} D G D/F# A^{sus}

Je - sus, You're my hope and ____ stay. And when I can - not stand, I'll fall on _

54 Bm⁷ $G^2(\text{no}3)$ A^{sus} D D.S. al Coda

____ You. Je - sus, You're my hope and ____ stay. _____ Lord, I

CHORUS 2

58 \oplus Coda D A/C# Bm⁷ G

Lord, I need You, oh, I need You. Ev - 'ry hour I

62 D A D/F# G D/A G/B D/A A

need You. My one de-fense, my right - eous-ness; Oh, God, how I need

66 D D/F# G

You. My one de - fense, my

68 D/A G/B D/A A D

right - eous - ness; Oh, God, how I need You.