

# Awake O Sleeper

Words and Music by  
Ike Ndolo

♩=96

## VERSE 1

C

Am<sup>7</sup>



1. In the dark-est times of life, — when our lights re-fuse to shine: .

## VERSE 2 & 3

F

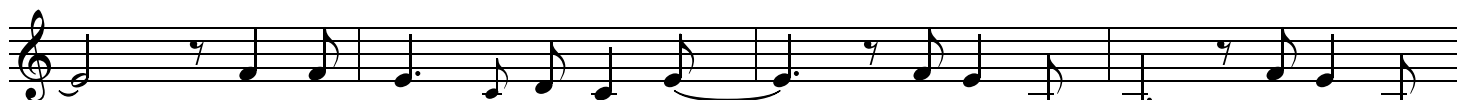
C



— You are there, — You are there. — 2. When our hearts be-come like stone, .  
(3. In the) midst of life's de-cay, —

Am<sup>7</sup>

F



— when we live with-out hope: — You are there, — You are there.  
— when our lives be-come like graves: — Res-cue us, — res-cue us. —

## PRE-CHORUS

Dm

F

Dm



Don't let your hearts be trou-bled, don't let your

## CHORUS

F<sup>2</sup>



hearts be trou-bled. — A - wake, O sleep - er! A -

21 Cmaj<sup>7</sup>/E F<sup>2</sup> C

-rise from slum - ber! Christ is call - ing \_ your name! \_

26 1. G/B 2, 3. G/B CHORUS F<sup>2</sup>

3. In the A - wake, O sleep - er! A -

30 Cmaj<sup>7</sup>/E F<sup>2</sup>

-rise from slum - ber! Christ is call - ing \_ your name! .

2nd time to Coda ⊕ 34 C G/B BRIDGE F<sup>2</sup>

A - wake! \_\_\_ A - rise! \_\_\_ And  
(O \_\_\_ sleep - er!)

38 Cmaj<sup>7</sup>/E F<sup>2</sup> Fm

fol - low \_\_\_ the light! \_\_\_ A-wake! A - rise! \_\_\_ And

42 C F<sup>2</sup> Cmaj<sup>7</sup>/E

fol - low \_\_\_ the light! \_\_\_ A - wake! A - rise!

47 F<sup>2</sup> C/E D.S. al Coda

Christ is call - ing \_ your name. \_\_\_ A -

52  $\oplus$  Coda G/B ENDING F<sup>2</sup> C

Christ is call - ing \_ your name! \_