

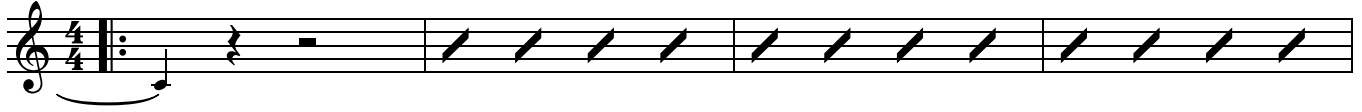
Let Our Faith Become A Mountain

Words and Music by
Kim Walker-Smith, Lindsey Sweat
and Hank Bentley

♩ = 135

INTRO / TURNAROUND

Am F C



5 Am F C



VERSE

9 Am F C



1. You a - lone are the Heal - er for the hurt - ing. _
2. You a - lone know the end and the be - gin - ning. _

13 Am F C



You a - lone are the Ref - uge for the bro - ken. _ So
You a - lone see a way when hope is fad - ing. _ So

17 Am F C



strength - en _ our hearts _ and let us not grow _ wea - ry. _
strength - en _ our hearts _ and let us not grow _ wea - ry. _

21 Am F C

Stead - y ___ our souls ___ and make us brave in the fi - re. ___ Let our faith .
 Stead - y ___ our souls ___ and make us brave in the fi - re. ___

CHORUS

25 F G

___ be - come ___ a moun - tain that will rise ___ and nev - er ___ fall. ___ Lift-ed high .

29 F G

___ a - bove ___ the val - ley, we de - clare ___ Your king - dom ___ come. .

32 F G

___ We will cling ___ to what ___ You prom - ised 'til the day ___ You call ___ us home. .

36 F

___ Let our faith ___ be - come ___ a moun - tain we ___ stand on. - tain we ___ stand on. .

BRIDGE

40 G F C

___ We will stand un - af - fect - ed by the cha - os. .

45 G F G

___ We will stand no mat - ter what ___ the ___ cost. No more wor-

50 F 1. C G

- ry, no more fear. _____ Ev - 'ry doubt _ will dis - ap - pear. _ We will

54 2. C G

_ will dis - ap - pear, _ dis - ap - pear. _____ Let our faith .

CHORUS

58 F G

_____ be - come _ a moun - tain that will rise _ and nev - er _ fall. _ Lift - ed high .

62 F G

_ a - bove _ the val - ley, we de - clare _ Your king - dom _ come. .

65 F G

_ We will cling _ to what _ You prom - ised 'til the day _ You call _ us home. .

69 1. 2. F

_ Let our faith _ Let our faith _ be - come _ a moun - tain we _ stand on. .

OUTRO

73 Am F C

77 Am F

1. C	2. C
---------	---------

The musical staff consists of a single line with a treble clef. It contains four measures of rhythmic notation, each represented by a diagonal slash. A repeat sign (two vertical lines with a double bar line) is placed at the end of the fourth measure. Below the repeat sign is a diamond symbol. Above the staff, the chord 'Am' is written above the first measure, and 'F' is written above the second measure. To the right of the staff, there are two boxes for first and second endings. The first box contains '1.' and 'C'. The second box contains '2.' and 'C'. A fermata symbol is positioned above the diamond symbol on the staff.