

Good Shepherd Of My Soul

Words and Music by
Fionan De Barra, Keith Getty,
Kristyn Getty and Stuart Townend

♩ = 64

INSTRUMENTAL

C Fmaj⁹/A G F²

VERSE 1, 2 & 3

C F C



1. Good Shep-herd of my soul, come
2. The trou-bled find their peace in
3. I'll walk this nar-row road with

6 Am F/G C

F C Am G D⁷/F# G C/E



dwell with - in me; _ take all I am and mould Your like-ness in me. _ Be -
true sur - ren - der; _ the pris - 'ners their re - lease from chains of an - ger. _ In
Christ be - fore me, _ where thorns and this - tles grow and cords en - snare me. _ Though

9 F Am G F

Dm⁷



-fore the cross of Christ, this is my sac - ri - fice: _ a life laid down and read - y to fol - low.
springs of liv - ing grace I find a rest - ing place _ to rise re - freshed and read - y to fol - low.
doubt - ed and de - nied, He nev - er leaves my side, _ but lifts my head and calls me to fol - low.

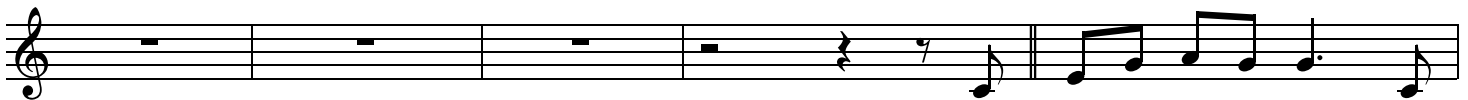
INSTRUMENTAL

VERSE 4

12 C Fmaj⁹/A

G F²

Am G/B



4. And when my days are gone, my

17 C

Dm⁷

C/E


Am⁷

G



strength is fail - ing, _ He'll car - ry me a - long through death's un - veil - ing. _ Earth's

20 Dm⁷ Am G F Dm⁷



strug-gles o - ver-come, heav'n's jour-ney just be-gun to search Christ's depths and ev - er to fol - low, .

Detailed description: This block contains the first line of musical notation. It starts with a treble clef and a key signature of one flat (B-flat). The melody consists of eighth and quarter notes. Chord symbols are placed above the staff: Dm⁷ (measures 20-21), Am (measure 21), G (measure 22), F (measure 22), and Dm⁷ (measures 23-24). The lyrics are written below the staff.

23 C Dm⁷ Dm⁷/G

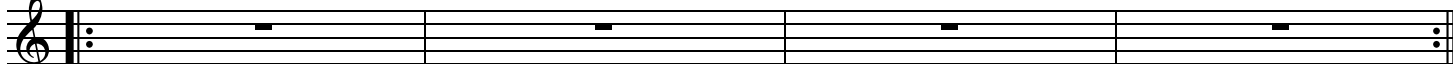


to search Christ's depths and ev - er to fol - low.

Detailed description: This block contains the second line of musical notation. It continues with a treble clef and a key signature of one flat. The melody consists of quarter and eighth notes. Chord symbols are placed above the staff: C (measures 23-24), Dm⁷ (measures 25-26), and Dm⁷/G (measures 27-28). The lyrics are written below the staff.

INSTRUMENTAL

25 C Fmaj⁹/A G F²



Detailed description: This block contains the third line of musical notation, which is an instrumental section. It starts with a treble clef and a key signature of one flat. The staff contains four measures of whole rests, indicating that the instrument is silent during this time. Chord symbols are placed above the staff: C (measures 25-26), Fmaj⁹/A (measures 27-28), G (measures 29-30), and F² (measures 31-32).